

September 17, 2009

The Source

Training, Professional Development & Research in the Rehabilitation Field

The Rehabilitation Summit

September 21-23, 2009

The Desmond • Albany, NY

See you at The Rehabilitation Summit ! If you are not registered, Full 3-day and 1-day registration will be available on-site. This is the event to get the most up-to-date information and share in establishing action plans and reaching consensus on issues related to the field of rehabilitation. Join other Professionals and Government Officials to acquire knowledge that will promote quality services that enhance all opportunities for the individuals with disabilities we support. You will enjoy the incredible 4th Annual Art In Motion Art Show, learn from our 1-800 FLOWERS. COM Key Note Speaker Jim McCann, re-frame your organization with our Plenary Speaker, Michael Margolis, visit our many Exhibitors who may meet the needs of your organizations, celebrate at our Annual Business Awards Luncheon and NYSRA Awards Dinner, and enjoy a "Fun In the Sun" Beach Party.

The Rehabilitation Summit has something for everyone!

National Disability Employment Awareness Month – October

Expectation + Opportunity = Full Participation, the National Disability Employment Month theme for 2009, captures the vital role that expectations play in our successes as individuals and as a society. Expectations alone, however, are not enough. Individuals must also have opportunities and access to a full range of employment choices to maximize their talents. With both the expectations and opportunities, people with disabilities will become full participants in our economy.

"People with disabilities must be woven into our work culture. Already, we benefit from the incredible array of talent they bring to our workplaces. But we must raise the bar, we must create the inexorable expectation that people with disabilities will contribute in every way to our economic successes. Only by nurturing this expectation and providing people with disabilities with unlimited employment opportunities, can we all benefit from their talents."

Kathy Martinez, Assistant Secretary U.S. Department of Labor

To Order: The NDEAM 2009 Poster is available in both English and Spanish. The posters are available in

one size, 20" x 15," at no cost to you. Please go to <http://www.pueblo.gsa.gov/rc/odep.htm> to enter your online order. The maximum is 100 posters. You may also download a pdf version <http://www.dol.gov/odep/pubs/ndeam09.pdf>

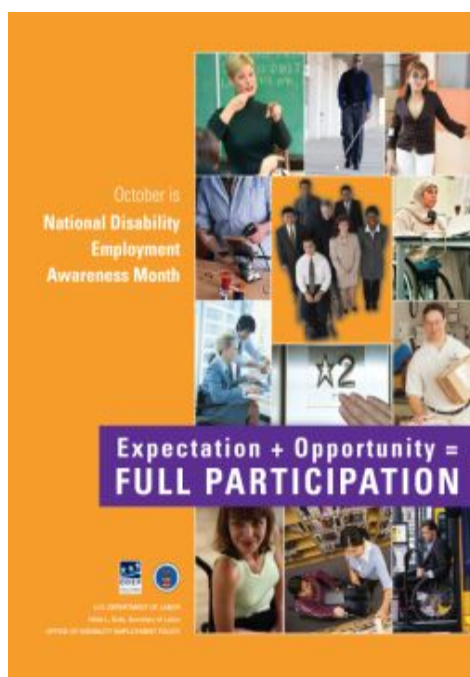
RRTI Events

RRTI Trainers' Council Meeting
9/21—The Desmond
Albany, NY

MTP Job Readiness Curriculum
Instruction for MTP School Professionals
9/23—The Desmond
Albany, NY

"What would you do if...? Helping Staff
Deal with Sexuality Issues of Individuals
with Developmental Disabilities
9/30 -Community Services for the
Developmentally Disabled
Buffalo, NY

REHABILITATION
RESEARCH AND
TRAINING INSTITUTE
RRTI
WWW.RRTI.ORG





**“What would you do if...?” Helping Staff Deal with Sexuality Issues of
Individuals with Developmental Disabilities**

Buffalo—September 30, 2009

In Partnership with DDWANY

SPACE is LIMITED, so register today. As a LMSW, CSW and the Assistant Coordinator of Sex Education for YAI/National Institute for People with Disabilities, **Bobra Fyne** will bring her experiences designing, developing, and implementing social sexual skills programs. Besides training staff in her own agency, she speaks and trains on the state and national level. Bobra facilitates ongoing therapeutic groups using psycho/socio-dramatic techniques and has published extensively on a vast array of HIV/AIDS and social sexual issues as they pertain to people with mental retardation and other developmental disabilities.

Bobra will guide attendees in understanding their roles and responses, help staff increase awareness of common behaviors, and provide an overview of sexuality policy that really works. This full day seminar is being offered in partnership with **(DDWANY) Developmental Disability Alliance of Western NY** at (CSDD) Community Services for the Developmentally Disabled in Buffalo.

Please contact RRTI at rri@nyrehab.org or (518) 449-2976.

**The American Association on Health and Disability (AAHD)
Announces Creation of 2009 AAHD Scholarship Program.**

The AAHD Scholarship Program will support students with disabilities who are pursuing higher education. Preference will be given to students who plan to pursue undergraduate/graduate studies in the field of public health, health promotion, or disability studies, to include disability policy and disability research. Royalties from the *Disability and Health Journal* will fund the first year of the AAHD Scholarship Program. Please visit www.aahd.us to read more about the Scholarship Program and to download the application. Please contact Roberta Carlin, Executive Director, for further information at rcarlin@aaahd.us.

REGISTRATION IS NOW UNDERWAY FOR ALL CERTIFICATE PROGRAMS!

Brookdale Center for Healthy Aging & Longevity

#500 Complex Care for Geriatric Mental Illness

Professionals from diverse disciplines may encounter elderly clients with mental health disorders, discovering complex challenges that require skillful attention. In this course, participants will explore practical issues related to geriatric mental health. Group discussion will be emphasized (4 units).

Dates and Times: Mondays, October 5, 19, 26 and November 2, 16, and 23 6:00 - 8:00

Price: \$360

#905 Introduction to Gerontology & Normative Aging

This 6 week foundation course examines the important concepts of Gerontology. Through the use of audio-visual tools and a review of the literature the student will examine the effect of aging on an individual and society. In-depth evaluation of physiological, psychosocial and emotional changes involved with the aging process. Review of impact of aging on our society and caregivers. Case material for study and discussion will be provided by the class (5 units). This class is required for all students.

Dates and Times: Thursdays, October 8, 15, 22, 29, and November 5 6:00 - 9:00

Price: \$450

Course Location: Brookdale Center for Healthy Aging and Longevity, Training Room, 425 East 25th Street, 13th Floor North

Classes are taught by leaders in the field of aging services. For more information or for a full course listing, visit http://www.brookdale.org/certificate_programs.htm or contact Raquel Romanick at raquel.romanick@hunter.cuny.edu or **212-481-4659**.

Related Industry Conferences and Events

10/1-3/09

"Advocacy Today, Success Tomorrow"
Empire State Association of the Deaf (ESAD)
Statewide Conference
Holiday Inn Express, Albany
Visit www.esad.org

10/6/09

"Building Public/Private Partnerships to Advance
Affordable Housing for People with Disabilities:
Challenges and Opportunities"
OMRDD Fall Housing Conference
Crowne Plaza, Albany
Visit: www.omr.state.ny.us/housing/index.jsp

10/17/09

Regional Conference on Autism and
Aspergers Syndrome (RCAAS)
SUNY Oneonta
Visit: www.rcaas.org

10/20 - 21/09

Workforce New York 2009 Fall Conference
NYATEP & NYSDOL
The Rochester Hyatt, Rochester
Visit: <http://www.nyatep.org/>

10/21/09

2009 Regional School to Work: Community Partnership
Conference
NYS APSE & Westchester ARC
Westchester ARC, Hawthorne
Visit: http://www.westchesterarc.org/calendar/APSE_10-21-09.html

11/2-4/09

"Real people. Realizing potential."
2009 CP of NYS Annual Conference
The Saratoga Hilton, Saratoga Springs
Visit: www.cpofnys.org

12/9-11/09

Perspectives on Employment of Persons With Disabilities
Conference
Hyatt Regency, Bethesda, Md.
Visit:
www.graduateschool.edu/Conferences/Perspectives/

State University of New York at Buffalo *NYS Supported Employment Training Initiative ~ SETI* NY Supported Employment Training Initiative September—October 2009 Training Calendar

9/28	Ethical Issues in Job Placement and Supported Employment	Syracuse, NY
9/28	Job Development I	New York City
9/29	Extended Services & Natural Supports	Hauppauge, NY
October - 2009		
10/14	Job Development II - Advanced	Albany, NY
10/15	Job Development I	Syracuse, NY
10/19	Functional and Situational Assessment	New York City
10/20	Orientation to Supported Employment	Rochester, NY
10/23	Training Techniques in Employment Settings	Albany, NY
10/26	Ethical Issues in Job Placement and Supported Employment	Buffalo, NY
10/26	Documentation and Record Keeping	Syracuse, NY
10/29	Counseling Skills for Direct Service Providers	Garden City, NY



Cornell University
ILR School
Employment and Disability Institute

ediONLINE

Your source for employment and disability-related training at Cornell University

NYSRA MEMBERS

**Receive 10% discount for spring
training series for benefits and
work incentives practitioners.**

[Visit ediONLINE at www.edi.cornell.edu](http://www.edi.cornell.edu)

Harles & AssociatesPO Box 15318 Washington, DC 20003 (202)-546-2847 charlie@harles.com***Registration for Federal 2009 Wage-Hour Webinars*****For Service Providers to Persons with Disabilities**

In an effort to bring the most up-to-date information to provider of services to individuals with disabilities, NYSRA is offering this series of 4 webinars on the following topics with various dates from which to choose.

Subjects Covered**Session One - day one - 90 minutes**

Policy considerations including 2009 Senate hearings and possible changes in statute

Compliance activities Documenting Disability

How to avoid problems Disabled for the Job

Using the Field Operations Handbook Determining prevailing rates

Basic steps for compliance Minimum wage adjustment

Session Two - day one - 90 minutes

Productivity measurement Measuring productivity for hourly rated jobs

Hourly vs. piece rates Conducting time studies for piece rates

Session Three - day two - 60 minutes

Who gets paid for what and when Coverage Issues

Interstate commerce Jobs covered and not

Employment status of client/workers (FLSA purposes only) Training Programs

Community based job exploration, assessment and training Volunteering

Down time

Session Four - day two - 60 minutes

Staff issues Travel time and meals

Exempt status Residential staffing

Total cost for the four sessions is \$200 per connection. You can have more than one person seeing the screen or you can have different people attend different sessions. The webinar is via a website that we will send you the link. You will need a phone for the audio portion - not a toll free number.

***The discount rate for NYSRA members is \$165 ***

Times for the webinars for November 17-18, 2009

Session One - 10:00 am - 11:30 am Eastern

Session Two - 1:00 pm to 2:30 pm Eastern

Session Three - 10:00 am to 11:00 am Eastern

Session Four - 1:00 pm to 2:00 pm Eastern

Times for the webinars for October 20-21, 2009, December 15-16, 2009.

Session One - 1:00 pm - 2:30 pm Eastern

Session Two - 3:30 pm to 5:00 pm Eastern

Session Three - 1:00 pm to 2:00 pm Eastern

Session Four - 4:00 pm to 5:00 pm Eastern

Handouts to be sent via e-mail -Section 14 (c) of Fair Labor Standards Act, Regulations Part 525, Chapter 64 Field Operations Handbook, Various forms and examples

Harles & AssociatesPO Box 15318 Washington, DC 20003 (202)-546-2847 charlie@harles.com**Registration for Federal 2009 Wage-Hour Webinars
For Service Providers to Persons with Disabilities****Date of sessions:** (check the one you want to attend) October 20-21, 2009 (afternoon sessions on east coast) November 17-18, 2009 (morning and early afternoon times on east coast) December 15-16, 2009 (afternoon sessions on east coast)**Attendee Information:**

Name _____

Organization _____

Address _____

City, state, zip _____

E-mail address _____

Phone _____

Payment: \$165 per person or connection for NYSRA members \$200 per person or connection for non-NYSRA attendees**Credit Card payments:****Master Card or Visa:**

Name on card: _____

Card number: _____

Exp. Date: _____

Signature: _____

a) Fax to: Harles & Associates 202-546-2854

b) Call : 202-546-2847

c) Use Paypal.com - payment to charlie@harles.com**Checks to:**

Harles & Associates, PO Box 15318, Washington, DC 20003

SAVE THE DATE

10/17/09

REGIONAL CONFERENCE ON AUTISM AND ASPERGER'S SYNDROME

DIANE TWACHTMAN-CULLEN,
Ph.D., CCC-SLP



HUNT STUDENT UNION -- SUNY ONEONTA CAMPUS

VISIT: RCAAS.ORG TO DOWNLOAD THE CONFERENCE BROCHURE AND REGISTRATION FORM

FOR FURTHER INFORMATION, CALL MARK SCHNEIDER AT (607) 434-1069 OR EMAIL: REGISTRATION@RCAAS.ORG



Exploring Autism 2009: Evidence Based Practice with Autism Spectrum Disorders

Saturday, October 17, 2009

Hunt Student Union
State University of New York Oneonta Campus
Oneonta, NY

If you need further information (or to print more brochures) go to the RCAAS website at www.rcaas.org or call Mark Schneider, Ph.D. at 607-434-1069.

Registration Form

**Exploring Autism 2009:
Evidence Based Practice with
Autism Spectrum Disorders**

October 17, 2009 Register early, seating is limited

Name: _____
 Business: _____
 Address: _____

 Phone: _____
 Fax: _____
 E-mail: _____

Conference Fees

Before September 15, 2009:
 \$70 Family member or Student (requires proof of full-time student's status)
 \$90 professional per person
 All fees include lunch.

After September 15, 2009:
 \$80 Family member or Student (requires proof of full-time student's status)
 \$100 professional per person
 All fees include lunch.

Please reserve _____ seats.

Make checks payable to: **RCAAS-Exploring Autism 2009**

Mail to: Mark Schneider, Ph.D.
 Exploring Autism 2009
 220 Highland Terrace
 West Oneonta, NY 13861

Room Reservations..
 Call the Holiday Inn directly for reservations at the special rate of \$89 per night. (1-800-465-4328)

If you must cancel..
 - Cancel by **September 10, 2009** for a full refund less a \$25 administration fee. No refunds issued after that date.

Quick Start Business Assurance Program

TECH VALLEY CONTINUITY LLC

Turning Potential Disasters into an Annoyance™



You Decide

It's Monday night and during dinner the phone rings. Your heart sinks as the alarm company says your offices are on fire. Now, standing alone in the parking lot, you watch your future go up in smoke. Do you collect your insurance, fire your employees, and begin looking for a job? Or do you activate your disaster recovery plan and return to work in the morning? It's your choice.

A well designed and properly tested business continuity / disaster recovery program can allow your company to survive an otherwise devastating crisis. If you feel you don't have the time, knowledge, or funding to protect your future, this is the program for you.

6 Hours to Business Assurance

Session I - Education and Discovery (3 Hours)

You will learn the components of a workable business continuity program. Together we will explore your business' operations and identify specific places where solutions can be applied to business operations or technical infrastructure.

*Tech Valley Continuity will research vendors, solutions and some estimated costs.
A possible implementation program will be prepared.*

Session II - Decisions and Actions (3 Hours)

As a team, we will review the recommendations and determine which ones to implement now and which ones to delay or not implement at all.

If you want to protect your business against computer failures, power outages, telecommunication failures, fires, floods, or general mayhem, contact:

RRTI
155 Washington Ave
Albany, NY 12110
(518) 449-2976
Barbara@nyrehab.org

REGION 2 TACE Training Announcement

REGION 2 TECHNICAL ASSISTANCE AND CONTINUING EDUCATION CENTER

Ethical Issues in Rehabilitation

Date: Tuesday, Oct. 20 - Wednesday, Oct. 21, 2009

Length: 1 & 1/2 days—2 days

Location: Albany, NY* Location details will be provided when a participant registers for this event.

Instructor: T. Duffy, M.S.Ed., N.C.C.

<http://www.crs.buffalo.edu/region2tace/about/staff/thduffy.html>

Program Description: A new Code of Professional Ethics for Rehabilitation Counselors was implemented in 2002. This program is designed to update rehabilitation professionals regarding changes in the content and structure of the new Code of Ethics. Using the new Code of Ethics as a guide, participants will develop increased skills for dealing with ethical dilemmas encountered in the rehabilitation process. Participants will draw upon their personal values, agency policies and procedures, the values of their clients, case information, and the Professional Code of Ethics in making decisions on ethical rehabilitation practices.

This Program is Designed For: Masters Level Rehabilitation Counselors, Vocational Evaluators, and Supervisors in both state and community work settings, at all experience levels.

Format: Mini-lecture, small group activities, and case studies.

Learning Objectives:

- Explore the framework of the updated CRC Code of Ethics
- Increase understanding of the Five Ethical Principles, which have relevance for rehabilitation practitioners
- Identify desirable rehabilitation practitioners' actions/behaviors consistent with the Five Ethical Principles
- Understand the relationship between the Five Ethical Principles and the Code of Ethics
- Explore personal values and how these values impact upon work in the rehabilitation field
- Identify and analyze the characteristics of an ethical dilemma
- Apply an ethical decision-making model to various ethical dilemma scenarios
- Address ethical principles and special issues/dilemmas (e.g., confidentiality and dual relationships)

Program Outline:

- Values exploration
- Review of the Five Ethical Principles
- Introduction to the New Code of Ethics
- Characteristics of an ethical dilemma
- Introduction to an ethical decision-making model
- Practical application of an ethical decision-making model Case studies



State University of New York at Buffalo

Region 2 Technical Assistance and Continuing Education Center

Parker Hall, Room 316, 3435 Main Street Buffalo, New York 14214-3007
716-829-3934 (phone) 716-829-3935 (fax) <http://www.rcep2.buffalo.edu>

REGISTRATION FORM - Fax Registration Form to: 716-829-3935

PLEASE TYPE OR PRINT CLEARLY

TITLE OF COURSE: _____

DATE OF COURSE: _____ **CITY:** _____

Your Name: _____ Home Phone: _____
(please indicate: Mr., Ms., Mrs.) (for emergency cancellations only)

Job Title: _____ Length of time in: current position _____ yrs. rehab. field _____ yrs.

Supervisor: _____ Phone (____) _____ E-mail _____

Company Name: _____

Company Mailing Address: _____

City: _____ State: _____ Zip _____

Business Phone: (____) _____ Fax: (____) _____ E-mail _____

Are you a veteran? ____ Yes ____ No Do you have a disability? ____ Yes ____ No

Do you need material in alternate format? A minimum of three weeks notice is required.

____ Braille ____ Disk ____ Large Print, specify font/size _____ ____ Sign Language Interpreter

____ Closed Captioning ____ Assistive Listening Device, please specify: _____

To make your training as comfortable and successful as possible, what type of assistive devices/services do you currently use?

____ Motorized Wheelchair ____ Manual Wheelchair ____ Scooter ____ Guide Dog

____ Personal Aide ____ Other, please specify _____

Highest education level obtained: High School Associates Degree Bachelor's Masters Doctorate

Which best describes your ethnic background? Black Non-Hispanic White Non-Hispanic Hispanic
 Native American Asian or Pacific Islander Other

IF YOU ARE A COMMUNITY REHABILITATION PROGRAM PROVIDER:

Does your agency have a working agreement with VESID, NJDVRs, NYC BVH, NJCBVI, PR Vocational Rehabilitation Administration (VRA), or VI Disabilities and Rehabilitation Services (DRS)? ____ Yes ____ No

Supervisor's Signature _____ Applicant's Signature _____

~~~~~ Fax registration form to: Registration Officer 716-829-3935 ~~~~~

**The Advocacy Center Presents:**  
**William Stillman**  
Author, Consultant & Presenter



**Demystifying Autism  
& other Neurological Differences**

**Thursday, October 29, 2009**

**9:00 AM - 4:00 PM**

**Strong Museum of Play - Auditorium**  
One Manhattan Square Rochester NY 14607

---

**In collaboration with**  
**UNYFEAT**  
**Parent to Parent of NYS**  
**NYS Self - Advocacy Association**

---

Address: \_\_\_\_\_

Email: \_\_\_\_\_

Fee: \$65.00 Professional \$30 Parent/Family Member  Check enclosed  Please bill my credit card

Credit Card Number: \_\_\_\_\_

Exp. Date: \_\_\_\_\_ Signature: \_\_\_\_\_

Billing Address (if different from above): \_\_\_\_\_

Scholarship request for an individual with a disability or a family member (limited):

Please check one:  Individual with a disability  family member

*Please mail registration with payment to The Advocacy Center, Attn: Anna Costalas, 590 South Avenue  
Rochester, NY 14620. Questions: Contact Anna Costalas at 585-546-1700 or costalas@advocacycenter.com*



People who have disabilities and or are elderly often depend on Social Security and other federal benefits to get by, but paper checks can be delayed, lost or stolen. The U.S. Department of the Treasury has a campaign underway to encourage people who receive Social Security benefits to switch from paper checks to safer, more convenient alternatives.

**Why** is the Treasury focusing on paper checks? More than 10 million Americans receive their Social Security and Supplemental Security Income (SSI) payments by paper checks, which can be vulnerable to weather delays, theft, and loss. **In fact, when there's a problem with a Social Security payment, nine times out of 10 it's with a paper check. New York State specifically ranks third in the nation in terms of paper check recipients.** Electronic payments are simply safer, easier and more convenient than paper checks, particularly for people who have disabilities or are elderly.

**Signing up is free**, quick and easy, and can get people on the road to financial fitness immediately. Two options recommended by Treasury are available:

1) **Direct deposit** – The **Go Direct**<sup>®</sup> campaign gives people with checking or savings accounts a fast, easy way to sign up for direct deposit. To sign up, people can call Treasury's toll-free **Go Direct**<sup>®</sup> campaign helpline at (800) 333-1795, go online to [www.GoDirect.org](http://www.GoDirect.org), or visit your local bank or credit union.

2) **Direct Express**<sup>®</sup> Debit **MasterCard**<sup>®</sup> – This Treasury-recommended **prepaid debit card** gives people without bank accounts a safe, easy alternative to paper checks. There are no sign-up fees, monthly fees or overdraft charges, and the card can be used to make purchases, get cash and pay bills. Most services are free. There are fees for a limited number of optional transactions and services. Call toll-free at (877)212-9991, sign up online at [www.USDirectExpress.com](http://www.USDirectExpress.com), or visit your local Social Security office.

Organizations like yours are very important to Treasury's effort because you are a trusted voice in your community. After four years of campaign activity, 3 million senior citizens and other federal benefit check recipients have switched to direct deposit!

### How you can help

- Display/distribute **Go Direct** and **Direct Express** card materials.
- Actively encourage those cashing or depositing federal benefit checks to switch to electronic payments.
- Incorporate **Go Direct** and **Direct Express** card materials into your financial literacy efforts.

For additional information, please contact Lauren Chernoff, the New York campaign representative at (312) 988-2329. Also visit [www.GoDirect.org](http://www.GoDirect.org) or [www.USDirectExpress.com](http://www.USDirectExpress.com).

